

Orca Project Positions PTMSC for Ocean Focus

by Anne Murphy



Dungeness Spit area in 2002. She was identified as the transient orca “CA 189.” This past summer, children who learned of her story aptly named the orca “Hope.” Transient orcas eat marine mammals and range along the west coast of North America, commonly making feeding trips into the Salish Sea. At the time of death, the whale was necropsied (autopsied) and found to have possibly the highest concentration of DDT and PCBs ever found in a marine mammal.

In 2008, PTMSC staffers were part of a team that resurrected her bones where they had been buried for nature’s clean up team to do their job (beetles and other “bugs” that feed on flesh and tissues). NOAA granted PTMSC permission to use the skeleton and tell this orca’s story. Since that time, staff and

Have you ever had the realization that planet Earth is actually smaller than you thought?

In childhood, the distances across oceans are perceived as practically infinite and the depths unfathomable. As the Internet allows images of ocean vents or terrains on the other side of the globe to become familiar, or after a trans-oceanic flight, we begin to feel a connection with the far reaches of our planet.

Oceanographers view our planet’s oceans as one global ocean, a connected system with a circulation pattern that moves deep water from the Atlantic to the Pacific and other ocean basins over long spans of time, roughly 500-1000 years. As residents of the inland Salish Sea, where ocean waters pulse in with tides and winds, we are witnessing some of the impacts of global ocean change

on our local environment. These changes include acidification, contaminant movement and uptake into food webs, and the increased accumulation of human-generated garbage.

The PTMSC feels a tremendous sense of urgency concerning the signs of ill-health in our global ocean. Dramatic fluctuations in chemistry and temperature add stress to life forms that are already facing dwindling or compromised food sources. PTMSC has responded to this call to action by expanding its programmatic focus to include global ocean issues.

This fall, PTMSC is launching a campaign to build a new Ocean Science Hall, connected to its Natural History Exhibit in Fort Worden State Park. The vision for the new hall began with the acquisition of a skeleton of a female orca who beached herself and died in the

Contents

• Orca Project Ambassadors	
• Plastics Sampling Continues	3
• Fall Lecture – Gina Ylitalo	
• Whales in Our Midst Exhibit	4
• So Many Ways to Give	5
• Sighted This Summer	6-7
• Remembering Barbara Cochran	
• Marine Legacy Society Charter Members	8
• Thanksgiving and New Year’s Eve Cruises	
• What’s New at the Burke	
• New and Renewing Members	10
• Donor Thank You’s	11

volunteers have been working with her bones and teeth, preparing them for exhibition and creating a first-of-its-kind, on-line resource tool. Other staff and volunteers have been researching topics related to this orca's plight to learn why some whale populations are in decline, how toxins move through the food web and what we can do about the declining health of our marine waters.

The approximate 27' x 44' Ocean Science Hall will serve as an exhibition space that readily converts to a teaching space for students. The articulated orca skeleton will be the centerpiece with accompanying exhibits that explore some of the issues contributing to her demise. One exhibit will document her stranding and ensuing death, including the effort of scientists and volunteers to rescue a mature male, presumably her son, who also attempted to beach himself.

Other displays will show how technology is used to study orcas. This gripping story lends itself to an exhibit that engages the public in a forensics style approach to learning about

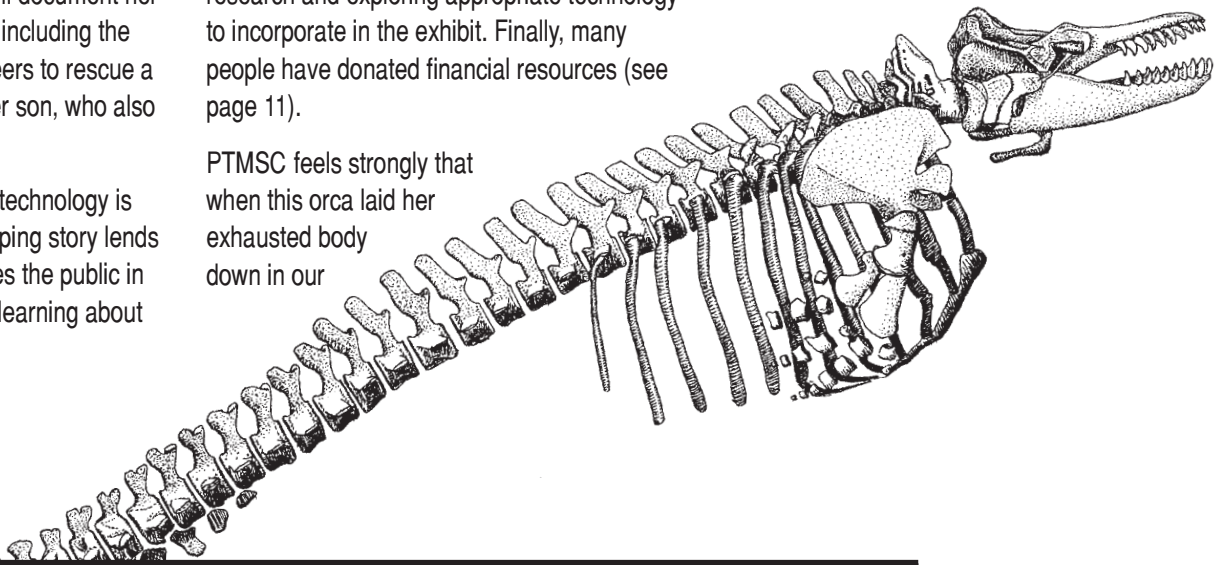
ocean health.

One of PTMSC's great strengths is its extensive support from volunteers and community members. Many people have already helped to create the new Ocean Science Hall, scheduled to open in early summer 2012. Volunteers have cast all 46 of the orca's teeth; they have photographed and measured her bones for an on-line bone atlas; they have x-rayed her flipper so that we can line up the "finger" bones accurately; and they will help articulate (assemble) the skeleton in early winter 2011. Additionally, volunteers will participate in exhibit concept development by assisting in background research and exploring appropriate technology to incorporate in the exhibit. Finally, many people have donated financial resources (see page 11).

PTMSC feels strongly that when this orca laid her exhausted body down in our

backyard, she came to us with a message. Now that we're starting to understand the gravity of this message, we realize that we must create a space for her story to be told. A very significant way that the community can participate is through financial contributions to the project. We need everyone's help. By giving her a voice we can build a more positive future for our global ocean.

Please don't hesitate to contact us for more information about this project.



Octopress is a publication of the Port Townsend Marine Science Center, a 501(C)(3) nonprofit educational organization. Your comments, contributions, and support are greatly welcomed and appreciated. PTMSC is located at Fort Worden State Park in Port Townsend, Washington on the Olympic Peninsula.

PTMSC

532 Battery Way, Port Townsend, WA 98368 (360) 385-5582 (800) 566-3932 Fax: (360) 385-7248
info@ptmsc.org | www.ptmsc.org

The Main Office is located on the 2nd floor of the Fort Worden State Park Office. The Marine Exhibit & Natural History Exhibit are located on the Pier and on the Beach at Fort Worden State Park.

Admin / Development

Liesl Slabaugh
info@ptmsc.org
ext. 104

AmeriCorps

Valerie Lindborg
vlingborg@ptmsc.org

Heather Jones
hjones@ptmsc.org

Jessica Swihart

jswhart@ptmsc.org

Julia Ledbetter

jledbetter@ptmsc.org

Development Director

JoAnne Heron
jheron@ptmsc.org
ext. 101

Education Specialist

Judy D'Amore
jdamore@ptmsc.org
ext. 204

Executive Director

Anne Murphy
amurphy@ptmsc.org
ext 102

Marine Program Coordinator

Chrissy McLean
cmclean@ptmsc.org
ext. 109

Marine Program Education

Jen Kingfisher
jkingfisher@ptmsc.org
ext. 105

Maintenance

Erik Wennstrom

Marketing

Christina Pivarnik
christina@pivarnik.com
531-0127

Volunteer & Citizen Science Coordinator

Jean Walat
jwalat@ptmsc.org ext. 112

PORT TOWNSEND MARINE SCIENCE SOCIETY BOARD OF DIRECTORS

Stephen Cunliffe
Dan Darrow

Linda Dacon
Eric Harrington

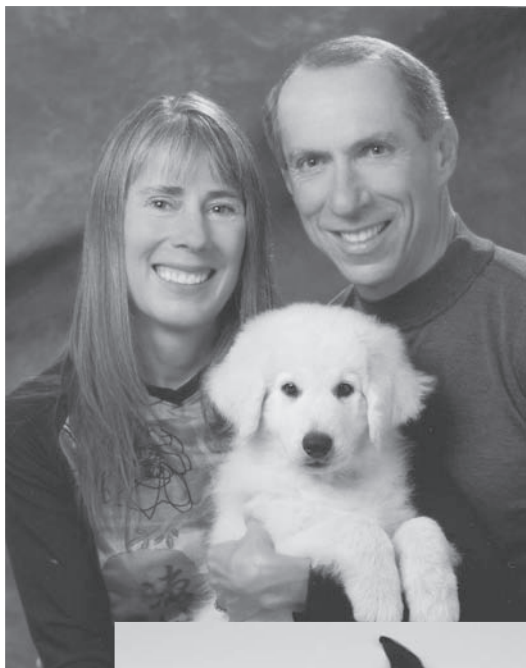
Linda Martin
Jim Mason

Gary Pascoe
Camille Speck

Louise Walczak

Orca Project Ambassadors, Henry and Karen Nichols

The entire Port Townsend Marine Science Center community is proud and honored to have Henry and Karen Nichols as Orca Project Ambassadors. "Henry's and Karen's passion and dedication to making positive change for the sake of all marine creatures, as well as our whole planet, is an inspiration to me," says Anne Murphy, executive director.



The pair became involved in the project when Henry, who is a dentist, was contacted for help casting orca teeth. Orca teeth become brittle when exposed to air so a set of replica teeth will be used when the articulated skeleton is displayed.

"As we learned more about this orca's story, we were moved and transformed," remembers Henry. He adds, "she brings us a message of hope by changing our awareness, by changing our consciousness, by changing our minds and hearts. And only by changing our minds and hearts first can we then transfer that energy into meaningful behaviors and actions. I cannot imagine a more important cause than environmental awareness and activism in this time of grave crisis. The time is now and our survival depends on it."

As Project Ambassadors, Henry and Karen will provide leadership in raising the \$1.25m needed to build the new Ocean Science Hall. Additionally, the Nichols will act as liaisons with the community to gather input and advise PTMSC as the project develops.



FREDERICKSON ELECTRIC, INC.

402 Glen Cove Road
P.O. Box 2108
Port Townsend, WA 98368
fredelectric@olympus.net

Erik Frederickson
President
(360) 385-1395
Fax 385-5333

David T. Chuljian, DDS, PS
(360) 385-3100

1303 Washington Street
Port Townsend, WA 98368

dave@chuljiandds.com
www.chuljiandds.com

insure@homersmith.com
www.homersmith.com

HOMER SMITH INSURANCE, INC.

Complete Business & Personal Insurance

804 Water Street Port Townsend, WA 98368
360/385-3711 Fax: 360/385-3711 1-800-464-4140

Plastics Sampling in the Salish Sea continues

The week of October 18-22, volunteers from all 12 US Salish Sea counties are sampling over 30 beaches for plastics. On four of those beaches, PTMSC is implementing a new protocol for more intensive sampling that will help us better measure accumulation. Stay tuned for results!

CARLA
VANDER VEN
**PORT TOWNSEND
HOSPITALITY**

OFFICE FT. WORDEN
360-385-0746 360-385-0133

P.O. Box 373
PORT TOWNSEND, WA 98368
pthospitality@yahoo.com

Contaminant Levels in North Pacific Killer Whales

Gina Ylitalo • November 18, 2010 7pm in NHE

Killer whales (*Orcinus orca*) are found in all oceans of the world and are top-level predators in the marine ecosystem. Being an apex predator, high concentrations of toxic, persistent organic pollutants (POPs) are expected to accumulate in the tissues of these animals. In the North Pacific, three different killer whale eco-types have been described and designated: residents, transients, and offshores. These three eco-types are genetically distinct and differ in various aspects of ecology, morphology, and behavior.



Resident whales prefer fish as their selected prey whereas marine mammals are the primary target of transient whales. Information about feeding preferences of offshore whales is more limited but they are thought to feed on fish.

Ms. Ylitalo will present information on contemporary levels of POPs, including the polybrominated diphenyl ether flame retardants, measured in Southern Resident killer whales and other North Pacific killer whale populations. Concentrations of these contaminants

will be examined based on life history factors, geographic range and diet. The concentrations of POPs in the killer whales will be compared to levels in other species of marine mammals from the North Pacific.

Ms. Ylitalo has worked for the Northwest Fisheries Science Center since 1989. Her current interests include establishing links between exposure to chemical contaminants and potential health effects on marine mammals and fish. She also works on methods for analyzing new contaminants in marine resources.

Ylitalo was one of the scientists who analyzed the body of the orca, CA 189, who stranded near Dungeness Spit in 2002. That orca's blubber contained a level of contaminants that was among the highest - if not the highest - ever measured in orcas. The PCB level found in the orca was dozens of times higher than concentrations known to affect the growth, reproduction and immune system of another marine mammal, the harbor seal. A newspaper report at the time said, "She [CA 189] basically knocked our instruments off."

For those of you who are not familiar with the PTMSC's Orca Project, CA 189 is the orca whose story we are preparing to tell and whose skeleton we will be displaying in our new Ocean Science Hall. See cover article.

Admission: Members \$5 (adults), \$3 (youth); Non-members \$7 (adults), \$5 (youth). The lecture will be in the Natural History Exhibit.

WHALES IN OUR MIDST on exhibit until December 31st

Visitors and residents alike are invited to view a new traveling exhibit entitled *Whales In Our Midst*. Developed by the Bainbridge Island Historical Museum and the Center for Whale Research, the exhibit is hosted by the Port Townsend Marine Science Center in Fort Worden State Park. It will be open until Dec. 31, 2010 as part of the Natural History Exhibit.



Through video, photographs and text panels, the exhibit focuses on the interactions between people and whales in the Northwest—from the first peoples' attitudes of fear and respect, through the early orca captures for Sea World in the 1960s and 1970s, to contemporary research and efforts to protect orcas.

The exhibit and accompanying video capture the conflicts and drama of recent history and features several key figures responsible for the banning of orca captures, including Ralph Munro, former Washington Secretary of State.

"Visitors and new residents to our state will be fascinated and moved by this recent history," said Anne Murphy, Executive Director of

PTMSC. "The exhibit helps us feel the critical importance of continuing to work to protect these animals. They are not only dramatic and beautiful icons of the Pacific Northwest, they are also important indicators of the health and sustainability of the marine environment."

Whales In Our Midst recently received the Washington Museum Award for Exhibit Excellence at the annual meeting of the Washington Museum Association. The exhibit will be shown at the State Capitol Museum in Olympia during the summer of 2012 and will travel to schools and other museums around the Pacific Northwest in succeeding years. It is an exciting introduction for PTMSC's forthcoming Orca Project, a 2011 exhibit that will feature the mounted skeleton and story of Hope, an orca that beached herself in the Dungeness Spit area in 2002.

Whales In Our Midst is open Friday through Sunday, Noon – 4 p.m. Admission is \$5 for adults, \$3 for youth, free for children five and under. PTMSC members are admitted free.

Many thanks to Soozie and Dan Darrow for sponsoring this exhibit.

So many ways to give....

If you love the Marine Science Center you want it to be healthy financially. There are so many ways to do that. In fact, there are giving opportunities and methods for every pocketbook. Even if you can't give now, consider leaving PTMSC in your will.

Marine Legacy Society

Barbara Cochran (story page 8) had to retire from her volunteer work in 2005 because of health issues. Because she cared about the Marine Science Center so much, she saw another way to keep on giving. She took out a gift annuity through the Seattle Foundation. It provided a modest quarterly check to her, and when she died this year, the remainder of the annuity came to the Marine Science Center. The easiest way to join the Marine Legacy Society is to leave PTMSC a bequest in your will, either a percentage or a given amount (and tell us about it, in writing preferably).

What is your dream for the future of the Salish Sea? For the future of the Port Townsend Marine Science Center? Join other PTMSC supporters, past and present, who have made bequests or have written PTMSC into their wills or planned gifts.

If you would like a copy of our brochure "Leaving a Legacy for the Marine Environment," or would like more information about the Marine Legacy Society (MLS), please contact JoAnne Heron, (360) 385-5582, ext. 101. Only 40 percent of people have a will. Only six percent of those who do have a will, leave a bequest. What a difference we could make if everyone made a gift to PTMSC's and our oceans' future!

Annual Gifts

This is the time of year—and actually the **only** time of year—that PTMSC comes to you, its treasured members and donors, to officially ask for your support for the work that we do in the community and on

behalf of the Salish Sea. PTMSC relies on individual support for almost 25 percent of our \$643,000 budget. This enables PTMSC to do all of the things which are not specifically covered in grants, such as our core educational programs, citizen science and exhibits. We need your support this year more than ever. We will be sending out an annual appeal to all of you who have not given recently and, if you are able, we appreciate your considering a larger than usual gift.

Orca Project Capital Campaign

PTMSC officially kicked off its Orca Project Capital Campaign on October 9 with an Open House of orca activities at both exhibits. In July of 2010, the PTMSC Board of Directors approved a \$1.25 million budget for the Orca Project and Capital Campaign, which includes programming, exhibitions and the Ocean Science Hall with Hope's skeleton beautifully articulated and displayed. With a combination of our initial Institute of Museum and Library Services grant of \$150,000 in the fall of 2009, and gifts from foundations, corporations and individuals since that time, we have raised approximately \$413,000, or slightly over 33 percent of our goal.

In these challenging economic times, we estimate that we will finish the campaign in the fall of 2012. Henry and Karen Nichols have graciously agreed to be our Honorary Campaign Chairs and spokespersons in the community. As we educate and ask the community for their help in this endeavor, we will need your support, your connections and ideas about other funders, along with your ambassadorship for this project. We will need approximately 600 gifts of all sizes, from something you might pay for a subscription to a magazine to the cost of a small house. If you are interested in learning more about our Orca Project, please visit our Website or call or email us for our new orca brochure.



SAVE THE DATE!

The **2011 Tides of March benefit auction** will be held on March 12th at the Jefferson County Fairgrounds. We hope to see you all there for another fun evening of food, friends and terrific finds. If you can help with this major fundraiser please contact Jean Walat, 360-5582, ext. 112, or jwalat@ptmsc.org. Contact auction chair Meredith Lowry, 360-385-9901, meredithlowry_55@hotmail.com to volunteer items or time. See you there!

Sighted this



AmeriCorps members Valerie Lindborg, Jess Swihart, Julia Ledbetter and Heather Jones are serious about "getting things done!" They served a total of 7,555 hours collectively this year. All four of them will be returning for a second term next year.



Mary Foster and Donna Puckett get into field inquiry during our teacher's workshop. They are among 30 teachers who learned how to teach science through inquiry this summer. One teacher summed it up by saying, "This will have a dramatic effect on my effectiveness and on student learning."

Schedule of Events

OCTOBER

19 Tues. Botany Study Group 7-9 pm

NOVEMBER

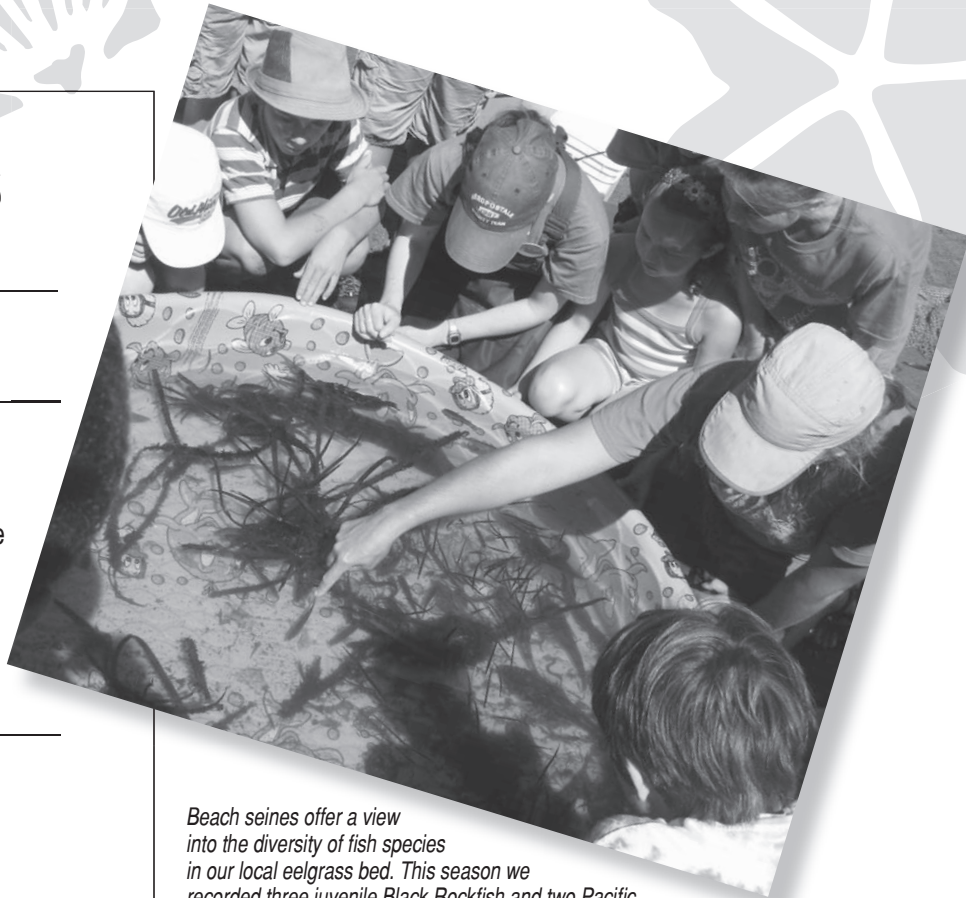
5 Fri. Winter Hours Begin
 16 Tues. Botany Study Group 7-9 pm
 18 Thurs. Toxins in Killer Whales Lecture
 26-28 Fri. Thanksgiving Holiday Gift Shop Sale
 Noon-4 pm 15% off everything!
 27 Sat. Thanksgiving Weekend Cruise
 1-4 pm

DECEMBER

21 Tues. Botany Study Group 7-9 pm
 31 Fri. New Year's Eve Cruise 1-4 pm

Both Exhibits Closed January

Check www.ptmsc.org for the schedule of programs



Beach seines offer a view into the diversity of fish species in our local eelgrass bed. This season we recorded three juvenile Black Rockfish and two Pacific Spiny Lumpsuckers, species which have not been seen in seines since 2005.

Summer...



Campers experiment with underwater sound in our first Whale Camp. This collaboration with Centrum combined art and science to teach 28 kids about whales and their role in our local ecosystem.

Dick Williams channels his "inner fish" for the Wooden Boat Festival. He is one of 167 volunteers who contributed 3,334 hours this season.



Eliza Dawson and Selden McKee prepare to photograph the right flipper of our orca, Hope. The photographs will be used to document all 124 bones in a unique online Bone Atlas.



A fixture in the Marine Exhibit and at outreach events, Moh O'Hanlon exceeded 4,000 volunteer hours this summer.



Two youngsters discover each other in our Marine Exhibit. This budding young scientist was one of over 7,700 visitors to our exhibits this summer.



Our volunteer gathering celebrated the dedication of our active volunteers. Bud Kannenberg, pictured with AmeriCorps members Julia and Heather, retired after eight years and 1100 hours of service.

This Humboldt squid was brought in by Peter Downey of Discovery Bay Shellfish and dissected on our pier by our AmeriCorps team. Although the extent of their range is considered to be San Diego, CA, we typically see a few each summer. The big exception was 2008 when hundreds of them entered the Strait of Juan de Fuca.



Remembering Barbara Cochran

This article was lovingly written by one Marine Legacy Society member about another one. Thank you, Betty, for sharing your memory of Barbara.

I first met Barb when I joined the Thursday Home Crew in 1999. [Home Crew are those behind-the-scenes saints who feed, clean and care for the animals in the touch tanks.] She and Joan Goff, Barbara Baird and a couple of others *were* the Crew. They knew the routine and did it well. They also went to lunch after Home Crew every Thursday and persuaded me to join them.

During that first year in PT, Bob and I bought a boat and joined the Yacht Club, and discovered that Barbara was an active member and a past secretary. She was the first woman to ever get a commercial fishing license in California. She and her friend Maxine lived on a boat in the LA area, fished and worked in the film industry. A local tour boat would point out their boat (because it was pink) and tell the visitors that it was operated by two women.

After moving to PT, Barbara took her boat *OD (Old Dog) Tray* to Alaska and back several times. She had various crew members (including Chris MacLachlin, another PTMSC volunteer) and her live-aboard cat, Tom Sherman. She was one amazing navigator and a pretty good engine mechanic. One year, she put a notice on

various local bulletin boards that read: "Crotchety old captain looking for crew to Alaska. Must be able to shop for and prepare own meals and must be agile enough to jump onto dock and tie up boat."



When Barbara's hands became sensitive to the cold water, she took on the Home Crew job of cutting up the fish and other food, and acted as eyes for those of us on ladders, pointing out the algae and other debris we needed to scrub away, but couldn't see from above. After suffering several strokes, she retired from Home Crew, but never lost her interest in the PTMSC.

Bob and I helped Barbara celebrate her 89th birthday in July, and we miss her very much. (Barbara passed away in August 2010).

--Betty Petrie

[One of Barbara's greatest gifts to PTMSC was the use of her boat for water quality monitoring trips on Port Townsend Bay with Port Townsend School District 8th graders in the early 90s. Barbara was an inspirational captain for the 8th graders. They loved feeding fish food pellets from the fish farm/net pen operation on the PT waterfront to Tom Sherman, the cat.]

Marine Legacy Society Charter Members

Thanks to the following Charter Members of the Marine Legacy Society who have made, or are making, bequests or planned gifts to PTMSC. Please join them in keeping this organization a strong force in the future of the Salish Sea. Please let us know if you would like to be part of this group of dedicated supporters.

Leslie Aickin	Karen & Tony DeLorenzo	Anne Murphy
Therese Cain	JoAnne Heron	Moh O'Hanlon
Barbara Cochran	Burt Howells	Libby Palmer
Augusta Comstock	Daphne Kilburn	Jamie Parker
Linda Dacon	Bob & Lydianne Kyte	Betty Petrie

Seth Bender Memorial Scholarship Fund

"There will always be a future need. This is a safe investment in the future. The advantage of putting PTMSC in my will is that it is so simple and direct. Even if you don't have a lot of money or a fancy house, setting something aside for PTMSC now will make you feel good for a long time." --Libby Palmer



Thanksgiving Weekend & New Year's Eve Cruises

Nov. 27 & Dec. 31

Tickets: \$55 per person

(\$50 for PTMSC, Burke Museum, Audubon or WOS members)

Reservations and information:

(360) 385-5582 ext. 104, (800) 566-3932 or cruises @ptmsc.org

Discounts available for children and groups

What's New at the Burke Museum

Presenting a New Exhibit

Ice Age Archeology Day! Sunday, Oct. 17 10 am – 4 pm



Burke Museum presents a day of exhibits and talks on what life was like during the coldest time the state has ever known - the last Ice Age! Burke archaeologists and other specialists will be on hand to give you the inside scoop on human life 12,000 years ago. The event features a mix of family-friendly activities with lectures and presentations from practicing archaeologists actively working in the field today-literally.

www.burkemuseum.org

Fall Hours:

Both exhibits open Friday, Saturday, Sunday, noon – 4 pm

Winter Hours begin November 5th

Only the Natural History exhibit is open Friday, Saturday and Sunday, noon to 4 pm until April 1



9522 Oak Bay Road, Suite 400
Port Ludlow, Washington 98365
(360) 437-9392



Donald R. Young, DDS, MAGD
Master, Academy of
General Dentistry

906 Ness' Corner Road
P.O. Box 268
Port Hadlock, WA 98339
dr_young@live.com
(360) 385-4373

What can we print for you?



SOS PRINTING

2319 Washington Street
Port Townsend WA 98368
Voice 360-385-4194 • Fax 360-385-5860
sos@olympus.net • sosprinting.biz



Networks Software Hardware

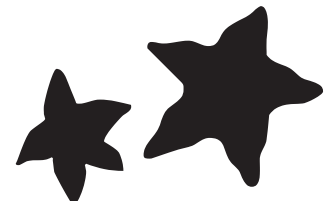
Berry Hill Networking
David Olsen : Consultant

Microsoft Small Business Specialist
Microsoft Certified Technology Specialist
CompTIA / Cisco Certified / ATSP / Sonic Wall

Serving
Jefferson County
since 1992

PORT TOWNSEND
360 379-6980

www.berryhillnetworking.com



New and Renewing Members

Student

Jennifer Woodbridge

Individual

Bud Babcock
David Beatty
Joan Beldin
Beverly Brice
Grace and Jerry Chawes
Barbara Cook
Dorian Curry
James & Donna Daubenberger
Mike & Marnie Forseth
Chrilo Von Gontard
Marcia Hartshorn
Malcolm Hepworth
Lydia Kelly
David Ketter
John MacElwee
Mark Magill
Mahalah Moore
Marsha Moratti
Gary & Elaine Nelson
Yvonne Otterness
Dan Penttila
Alan Rammer
Bob & Anne Reeves
Sally Robbins
Doug Rogers
Paul Rogland
Kathy Stevenson
Eleanor Stopps
Nan Toby Tyrrell
Peter von Christienson & Ginger White

Family

Jodi and Doug Adams
Marilyn & Jim Adensam
Jane Albee and Frank Layden
Ross Anderson & Mary Rothschild
Lori Anderson
Steve Bartik
Joseph Bednarik & Liesl Slabaugh
Kirsten & Tim Behrenfeld
Sheila Bender
Joshua Berger
John Bodger & Selden McKee
Mary Lou Boegehold
Mack & Barbara Boelling
Diane Bommer
Chuck and Luan Borgeson
Carolyn & Joe Braun
Martha Breunig
Jennifer Brinch
Dennis & Carol Burk
Don Bushell

Steve & Sarah Butterfield
Carter Camp
Barbara Carlson
Celia Carnighan
Barbara Caron & Charles Paul
Becky Case
Lloyd & Marty Chase
Norman & Maxine Christie
Loren Clark
Nicole Coates
Dan Cobb
Jeffrey Collins
Richard & Esther Conway
Susan Cook
Linda Crabtree
Mike Darrah
Jenifer De Wolf
Frances Dieu
Don and Lesa Dippert
Pamela Ducharme
Robert & Charlene Engel
Jim and Karen Erickson
Nan Evans
Sarah & Owen Fairbank
Charlie Fieldson
Charles Fleishman
Rocky Friedman
Linda & David Gaenicke
Terence & Cindy Germaine
Jim and Kendra Golden
George Goodall & Sandra Kurtz
Brianna Green
Travis Green
Mike Hamilton
Frank Handler
Wayne and Carolyn Hanks
Barbara Hansen
Sandra Haston
Hugh & Terry Haven
Ronald Hayes
Robert & Marge Helander
John & Beverly Henderson
Gloria Hill and Merrill Coulson
Jimmy Hively
Carla Hoggarth
J Anne Holman
Brigitte Hoopes
Derrold Hopkins
Linda Hudson
Steven & Carol Hurley
David & Gail Karges
John and Patti King
David & Joyce Klemann
Cynthia Knudson
Margot Kriel
Michael & Ron Kubec
Denis & Susan Langlois

Gregg and Darcie Larson
Lois & Dick Lindner
Judith Livingston
Susan Localio & Danie Brodkowitz
Kathy & Joe Luckraft
Len & Emily Mandelbaum
Jean Mann
Sue & Bob Maret
Glenn Marquardt
Don & Claudia Marseille
Virginia Marston & Ned Herbert
Melanie McGrory & Henner Schroder
Daniel & Kathryn Molotsky
Linda Newberry & Richard Ruble
Barbara and Duffy Nightingale
Brett Nunn
Gina Pallardy Hopkins
Margie & Gary Parker
Jim and Karen Pate
Molly and Jim Pearson
Margaret Pepe
Lesla Peri & Annabel Rogan
Anne Purvis
Karen & Harvey Putterman
Jan & Bob Quick
Quimper Community Credit Union
Jeff and Shelly Randall
Kath & Dan Raymond
Matthew and Katherine Read
Steve & Jean Reed
Melanie Reynolds
Anne Richardson & Richard Lynn
J. Ed Robeau
Virgil Rondeau
Sarah Rubenstein
Judith Rubin
Robin & Jack Scherting
Richard and Nancy Schneider
Don & Judy Schussler
Judy & Kim Simonelli
Kiel and Elizabeth Skov
Mike & Kay Smallwood
Kathleen Stafford
Roger Steinfort
Norm & Wendy Stevens
Taaffe Family
Patrick Teglia
Michael & Letitia Thompson
Judy & Jim Tough
Michael & Kiss Mow
Martha Jo Trolin & Libby Atkins
Debbie Tytler
Leonard Vaughn
Pamela Wacker
Joe & Claudia Wagner
Dianna Wiklund & Glenn Woodbury
Deb & Arthur Wilkowski

Mark Wilmot
Tom and Mattie Young

Friend

Paul & Joyce Anderson
Ann & Joe Baier
Carol Bernthal & Byron Rot
Joan & Bill Ewbank
Dorothy Hermanson
Diane & Clint Hurd
Jary & Jay Johnson
Peter & Helen Lauritzen
Nels Lindh
Ira Pool
Laura Rinn
Bill Seidler & Lynn Caverly
Carlyn Stark
Dorothy Stengel
Uptown Dental Clinic
David and Sandra Pitts

Sustaining

Ann Bambrick
Richard Barrows & Anne Murphy
Paul Becker & Lisa Crosby
Al & Megan Bergstein
Barbara Collins
Mary Coney
Ellen Dustman & Oliver Henry
Kathryn Edens
Gary & Karen Forbes
Jerry Higgins
Susan Hoover
TK & Diana Jones
Paulette & Terry Lyle
Sandy & Winnie MacNair
Darcy McNamara
Ernest & Frances Oxton
Doug & Jamie Reudink
Liz Reutlinger
Peggy Whyte

Business/Professional

Alan Greenwald
PT Shipwright's Co-op
Coila Sheard

Octopress Sponsor

Thomas Hagen
David Chuljian, DDS
Gary & Gay Eisenberger
Susan Moffat
Robin & Gabe Ornelas

Benefactor

Patricia Selch

Individual Donors

Since 6.1.2010

Under \$100

Karen & Tony DeLorenzo
Bill & Sandy Dengler
Kathryn Edens
Lee Faulkner
Jerry Higgins
Diana Honeycutt
Meredith & Bill Lowry
Michelle McConnell
Microsoft Matching Gifts Program
Kitty Reed
Camille Speck
Fred & Ann Weinmann
Merilynn Wilson

\$100 and up

Soozie and Dan Darrow
Nancy Fowler
Kathy Gibson
Amy Hiatt
Gordon & Lois James
David Mathieson
A.J. & Jerry Proutt
Kitty Reed
Doug & Jamie Reudink
Liz Reutlinger
Lanny & Terri Ross
Mary Ann Shaffer
Coila Sheard
Rick and Debbie Zajicek

\$500 and up

Jean Dunbar
Jim Meusey

\$1,000 and up

William Chapman
Wells Fargo Bank

\$5,000 and up

Rex & Reva Bates
Anonymous

Orca Project Donors

Under \$100

Nancy Alvarez
Robert and Marybelle Brown
Don and Sheila Burrell
Stan & Sigrid Cummings
Alicia Gifford
Scott Hagerty & Jennifer Tavares
Michael Zimmerman
& Hope Borsato
Marlene and James Newman
David and Sandra Pitts
Carole Richardson
& Bruce Johnson
Camille Speck
Barbara Stender
Valorie Williams

\$100 and up

Jack and Deb Bilan
Erin and Scott Dahlgren
Dennis Daneau & Debbi Steele
Britt & Curt Danielson
Renee Erickson
Jim and Barbara Ewing
Diana Honeycutt
Johanna & Mike King
Kitty Knapp
Stephanie & Christophe Mascis
Kris Mayer
Microsoft Matching Gifts Program
Rose and Joel Miller
Jan North
Dave Robison
Pete Schroeder
Mary Ann Shaffer
Jim Whittaker & Dianne Roberts
Jeff & Vikki Whitting

\$500 and up

Stephen & Suzanne Cunliffe
Karen & Tony DeLorenzo
Heidi Kanning
Clara & Jim Mason
Kathleen Mitchell & Scott Landis
Susan Moffat
Alan Peet

Dick & Anne Schneider
Alex & Elena Spear
Glenn & Phyllis Waldenberg

\$1,000 and up

Richard Barrows & Anne Murphy
Joan Fiore & Larry Hurwitz
David & Sarah Gooding
Eric & Jean Harrington
Carol Knaup
Mary Ann Shaffer
in memory of Sally Loken
Joseph Ryan
Sam & Berry Shoen

\$2,500 and up

Mike Cornforth & Linda Martin
Jean Dunbar
Puget Sound Energy Foundation

\$5,000 and up

Ed Littlefield
Chelcie & Kathy Liu in memory of
Bob & Lydianne Kyte
New Belgium Brewing Co
Henry & Karen Nichols

\$10,000 and up

D.V. & Ida McEachern
Charitable Trust
Ellen Ferguson
Hugh & Jane Ferguson Fndn
Jiji Foundation
Norcliffe Foundation
Norman Archibald
Charitable Foundation
Libby Palmer
Jock & Sonchen Patton

\$25,000 and up

Institute Of Museum & Library
Science
Peg Lewis
The Russell Family Foundation
Camilla Chandler
Family Foundation

Seth Bender Memorial Scholarship Fund

PTMSC's hands-on Marine Science and Natural History camps provide educational opportunities for boys and girls ages 8-18. This scholarship fund, established in memory of Seth Bender, provides tuition assistance for low-income families. We sincerely thank the following for their recent contributions:

Sheila Bender, Arlene Lillian, Alan Rammer, Martha Plotkin

Contributions to the scholarship fund are always accepted and can be sent to:

Seth Bender Memorial Scholarship Fund
Port Townsend Marine Science Center
532 Battery Way, Port Townsend, WA 98368



FOSS

Thank you to Foss Maritime for its support of plastics research and education



Sarah Spaeth and Eleanor Stopps

Stewardship Breakfast Donors

Thanks to the many donors who attended the Stewardship Breakfast on September 30th and helped celebrate the presentation of the Eleanor Stopps Environmental Leadership Award to Sarah Spaeth of the Jefferson Land Trust.

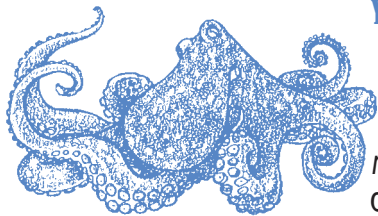
Donors will be recognized in our next newsletter.



Nonprofit Org.
U.S. Postage
PAID
98383
Permit No. 111

Fort Worden State Park
532 Battery Way
Port Townsend, WA 98368
www.ptmsc.org

RETURN SERVICE REQUESTED



YES, I WANT TO BE A MEMBER!

You can support the mission of the Port Townsend Marine Science Center—to promote a greater understanding of the marine sciences—by becoming a member or by renewing your membership.

YES, I WANT TO BE A MEMBER!

Check if this is a: New Membership or Renewal

(Please Print)

Add me to the e-mail list

Name _____ Phone _____ e-mail _____

Address _____ City _____ State _____ Zip _____

- | | | |
|--|--|---|
| <input type="checkbox"/> \$15 Student | <input type="checkbox"/> \$75 Friend | <input type="checkbox"/> \$250 <i>Octopress</i> Sponsor |
| <input type="checkbox"/> \$30 Individual | <input type="checkbox"/> \$100 Sustaining | <input type="checkbox"/> \$500 Benefactor |
| <input type="checkbox"/> \$45 Family | <input type="checkbox"/> \$125 Business/Professional | <input type="checkbox"/> \$1000 Sponsor |

I'm paying by: Check Credit Card: Visa MasterCard

Name as it appears on the credit card Credit Card # Exp. Date

Please mail this form to: PTMSC, 532 Battery Way, Port Townsend, WA 98368

Student & Individual

- ◆ Unlimited free admission to the Marine Science Exhibit and Natural History Exhibit
- ◆ PTMSC *Octopress* newsletter
- ◆ 10% discount on all regular priced merchandise at our Gift Shop
- ◆ Discount admission to all PTMSC events: Protection Island Cruises, Speaker Series, etc.
- ◆ Reciprocal member privileges at the Burke Museum
- ◆ PTMSC bookmark
- ◆ Monthly e-mail notification of upcoming events
- ◆ Recognition in the *Octopress* newsletter
- ◆ Unlimited use of the PTMSC library
- ◆ Advance notice of programs & events

Family

- ◆ All of the above plus unlimited free admission to the Marine Science Exhibit and Natural History Exhibit for your family
- ◆ Tuition discounts for the PTMSC Hands-On Summer Science Camps
- ◆ 2 free admission tickets for friends

Friend

- ◆ All of the above plus 6 free admission tickets for friends and/or associates

Sustaining

- ◆ All of the above plus 10 free admission tickets for friends and/or associates

Business/Professional

- ◆ All of the above plus a link from our Web site to yours

Octopress Sponsor

- ◆ All of the above plus a business card ad in the *Octopress* newsletter

Benefactor & Sponsor

- ◆ All of the above and recognition in the Annual Report

